

Welcome!

Letter to the Editor Training

May 2, 2023



MEET THE NETWORK PRESENTER



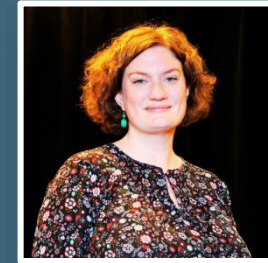
**Eilis
McCulloh,
HM**

Grassroots Education and
Organizing Specialist



**Laura
Peralta-
Schulte**

Senior Director of Public
Policy and Government
Relations



**Meg
Olson**

Grassroots Mobilization
Director



TODAY'S AGENDA

-  **Thriving Communities
Policy Update**
-  **Steps to Writing a
Powerful LTE**
-  **Time to Write**
-  **Large Group Sharing**



New Reality: Living with a Real Timeline:

June 1

- ☀️ **Treasury Secretary Yellen announced yesterday that Treasury will not be able to pay the bills on or around June 1.**
- ☀️ **Leading With Values:** The House bill represents a choice. They protect tax cuts for the wealthy and asked hard-working Americans and the most vulnerable to pick up the bill.
 - ☀️ We can make better choices.
- ☀️ **Our strategic goal is grounded in Catholic Social Justice:**
 - ☀️ Show the value of these programs and how cuts hurt real people.
 - ☀️ Reinforce Support for Programs/Hold Members Accountable



Thriving Communities Policy Update

Discretionary Spending

- ☀️ **10 years of severe funding caps** that deepen over time on non-mandatory, or discretionary, federal funding.
- ☀️ Caps are based on a deceptive formula that would **hold total discretionary funding for the FY 2024 to FY 2022 levels**—but it exempts defense spending.
- ☀️ **Only \$586 billion** (out of \$1.47 TRILLION allocated to discretionary spending) would be left for all other spending for health, education, housing, hunger prevention, the protection of environmental, nuclear, food and drug safety, and other key programs.
- ☀️ **This is a full 22% cut from current levels of \$756 billion.**



Thriving Communities Policy Update – Examples in WIC & Veterans

- ☀ 1.7 million women, infants and children who would lose needed nutrition support under the Special Supplemental Nutrition Program for Women, Infants, and Children (WIC)
- ☀ More than a million elderly individuals now served by Senior Healthy Meals programs like Meals on Wheels
- ☀ Veterans Health supports through the VA devastated.



Thriving Communities Policy Update – Examples in Housing

- ☀ Drastically cut HUD programs causing nearly 1 MILLION households served by the department's rental assistance to lose housing assistance.
- ☀ Homelessness will be significantly increased.
- ☀ 120,000 people experiencing homelessness will lose services through HUD.



Thriving Communities Policy Update – Mandatory Programs - Medicaid, SNAP

- ☀ Medicaid and SNAP - structural change lasts.
- ☀ More than 10 Million people in Medicaid expansion states could lose their health coverage.
 - ☀ States would be forbidden to exercise flexibility.
 - ☀ Cuts to State funding.
- ☀ More than 10 million people, about 1 in 4 SNAP participants, including about 4 million children, live in households that would be at risk of losing food assistance



Thriving Communities Policy Update – Work Requirements

- ☀ The programs under attack typically have work requirements already.
 - ☀ SNAP: Able Bodied Adults Without Children under age 50 can receive SNAP for 3 months while unemployed in any 3 year programs.
 - ☀ HUD: Maximum earned income and other income verifications.
- ☀ NEW Work Requirements for MEDICAID.
- ☀ REMEMBER: Most people who can work do.
Barriers to work are real.



Thriving Communities Policy Update – Provisions to Protect the Wealthy - Taxes

- ☀ Removes funding for the IRS that is targeted to improve customer service and make sure people pay what they owe.
 - ☀ CBO has estimated this would add \$114 billion to the deficit over the next decade because the reduced funding would mean the IRS could do less to enforce our tax laws.
 - ☀ Closing the Tax Gap (\$114 B): A significant amount of wealthy households do not comply with the law.
- ☀ Push to re-up Trump-era tax cuts for wealthy individuals and corporations in May.



Why Letters to the Editor?

- ☀️ Widely read local content
- ☀️ Members of Congress pay attention
- ☀️ LTE campaigns create movements





Find your local paper's rules

The Plain Dealer, cleveland.com and the Sun newspapers welcome letters to the editor that comment on and further the public debate on topics of general interest.

Please keep in mind that we expect exclusivity.

To submit a letter, please fill out the form below.

Letters may also be mailed to:

Letters to the Editor, The Plain Dealer and cleveland.com

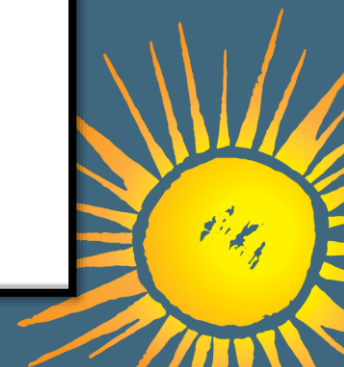
Be sure to include your daytime phone number and home address on all submissions.

Submissions that exceed 200 words are not likely to be considered for publication in the Letters Unlimited blog on cleveland.com or in the print edition of The Plain Dealer. We recommend measuring your letters for length before you paste them into the submission form below. We edit for length, clarity, accuracy and style.

Please include your full name, address and daytime telephone number for verification purposes.

Use of this form constitutes acceptance of our [User Agreement](#). Please read our [Privacy Policy](#).

All submitted letters will be considered for publication on cleveland.com. However, if your letter is also selected for print publication, please state in the message box, before you copy in your letter, which publication you wish to



Steps to write your LTE



Find issue coverage



Has your local paper already covered the issue?

Creative fixes needed to end costly bureaucratic hurdles for SNAP, other benefits: editorial

Published: Mar. 10, 2023, 5:57 a.m.



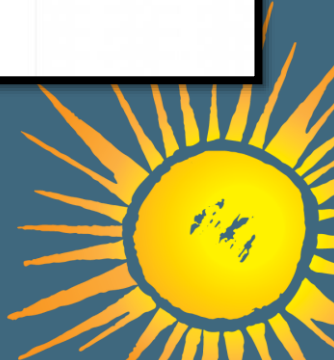
NEWS

Lose SNAP benefits? These 5 pop-up food giveaways could help

Published: Apr. 20, 2023, 10:34 a.m.



Advertisement



Steps to write your LTE



Start with your qualifications.




“As a member of Sacred Heart Catholic Church, an eighth-grade teacher, and a volunteer at Blessed Trinity’s Mobile Pantry, I cannot stay silent while Senator Smith supports proposed cuts to our nation’s Medicaid, food, and housing programs.”



Steps to write your LTE


Tell them what you think!

-  “Every day, I encounter folks in our local community—our neighbors—who are struggling to meet their basic needs. Programs like the Supplemental Nutrition Assistance Program (SNAP) help by assisting those with the greatest need. In fact, 92% of SNAP benefits go to households with incomes at or below the poverty line, and 86% of benefits go to a household with children, elderly person, or person with disabilities. Recent cuts to SNAP have devastated families and overwhelmed our local soup kitchens and food banks; further cuts would be disastrous. And now, wealthy lobbyists and some politicians want to take away vital human needs programs like the Supplemental Nutrition Assistance Program (SNAP) and Medicaid.”



Steps to write your LTE

 Bring it together with a legislative ask!

 “I pray that Senator Smith will see all the good folks in our community who are struggling and act in their best interest. A strong social safety net makes our community strong. Senator Smith must vote against any cuts to our nation’s Medicaid, food, and housing programs; and it’s time to tax the rich so they pay what they owe.”



How do you write an LTE



Sign It!



Your Name + [Name of NETWORK Advocates Team or Member of NETWORK Advocates for Catholic Social Justice] + Your City/Town



Submit!

- ☀ Don't forget to check the submission guidelines!
- ☀ You can write to multiple papers—just wait 3 weeks before repeating.



To Review:

- ☀ Start with your qualifications
- ☀ Tell them what you think!
- ☀ Close with a legislative ask



Sample LTE:

- The Senate Joint Economic Committee reported that every dollar in credit outlay yielded \$1.25 in local economic activity as families used their payments for basic necessities like food, housing and utilities.
- There is no evidence that the credit disincentivized work in families that benefited.

Here's sobering news: Since the ECTC expired in December 2021, families with children realized a 25% increase in food insufficiency. Millions of children across the U.S. became vulnerable to poverty in 2022, including over 1 million children in New York state.

As a New York Advocate for NETWORK Lobby for Catholic Social Justice, I urge Sen. Schumer, during these final days of this legislative session, to guide the Senate to reinstate a monthly, fully refundable Expanded Child Tax Credit!

Let's make 2023 a Happy New Year for children in New York and across the nation!

ANNE KIEFER

Penn Yan



Now, it's your turn...

- ☀ Start with your qualifications
- ☀ Tell them what you think!
- ☀ Close with a legislative ask



See you next time!

Send your LTEs to:
info@networklobby.org

